



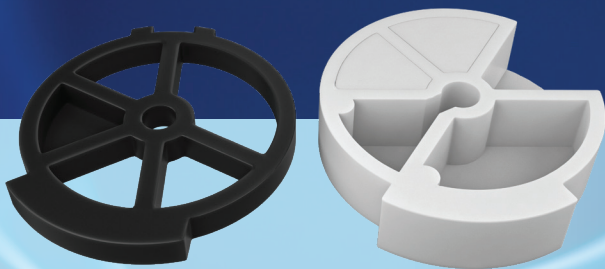
**Built**  
TO LAST  
**Years**  
OF SERVICE

## Water Softener and Conditioner

The AQS™ features the most expandable and flexible valve on the market today. This valve utilizes up-flow regeneration to wash the media for more efficient and effective cleaning. Ultimate performance and reliability are available from the patented ceramic disc design with (7) seven advanced programming options with fully adjustable cycles.

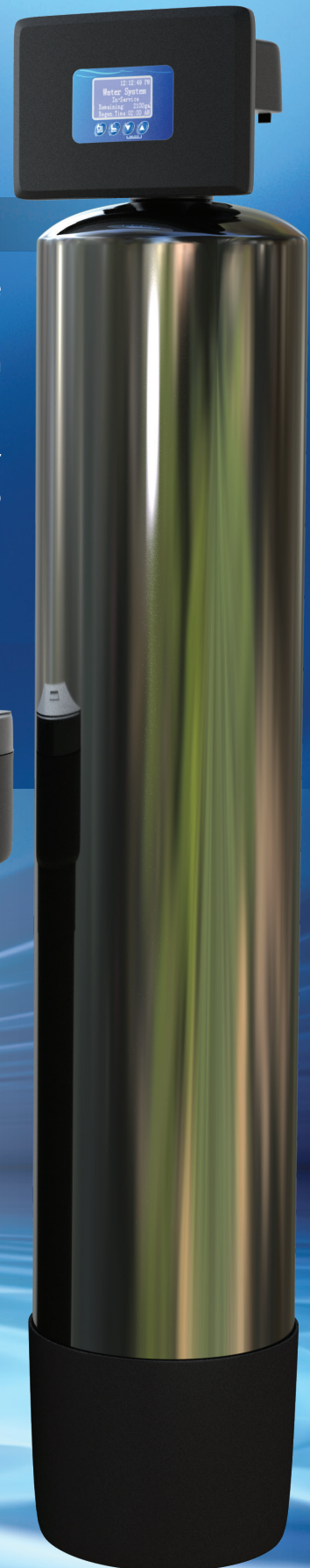
Interlock features, signal outputs, and twin-demand options are available to supply water 24/7. Advanced work modes are available with (4) four adjustable cycle sequences to achieve the exact configuration needed for any application.

All ceramic components are guaranteed for life.



### Corrosion Free Ceramic Disk Technology:

- Patented ceramic discs are corrosion and abrasion resistant for longer life and reduced maintenance
- Made of Corundum ceramic and graphene (200x stronger than steel!) with no wear parts to service or replace
- Hermetically sealed parts for impregnable resistance to corrosion, wear, or tear
- Maintenance-free actuators
- Ceramic Disk ByPass
- Lifetime guarantee on internal ceramic and graphene parts
- Bright, easy to read LCD display
- Multiple, programmable efficiency settings; grains exchanged per lb. of salt
- Long-term memory for program functions
- 72-hour memory backup
- Featuring made in USA NSF 41|63|372 certified Resin from Resin Tech



A lifetime of soft, conditioned water for your family and home from AQS™ Super Flow Series featuring Ceramic Disk Technology

Backed by over 100 years of combined experience





Tested and Certified by IAMPO against NSF/ANSI Standard 44 softening capacity and effectiveness of a water softener.



## Water Softener and Conditioner



Ceramic Disk Bypass



Protective Cover



Bright, easy to read LCD display



### Optional F142 Valve



One Valve on Duplex Tanks

- Patented design: one valve on duplex tanks, working in series
- Under 15 PSI pressure drop, the flow rate is 18 GPM
- Filtration + softening duplex tanks system working in series
- Ozone aeration+ filtration duplex tanks system working in series (for iron and manganese removal)
- Softening duplex tanks system working in series
- Three or more tanks can be used in series

### Plain

- AQS-R
- AQS-M
- AQS-L
- AQS-XL



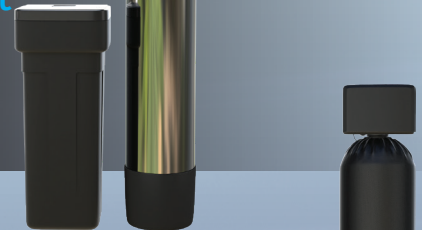
### Tank Shroud

- AQS-TS-M
- AQS-TS-L
- AQS-TS-XL



### Full Weld Jacket

- AQS-JKT-R
- AQS-JKT-M
- AQS-JKT-L
- AQS-JKT-XL



### Plain Cloth Jacket Black

- AQS-NP-PLAIN-M
- AQS-NP-PLAIN-L
- AQS-NP-PLAIN-XL
- AQS-NP-PLAIN-GY-L



	AQS-R	AQS-M	AQS-L	AQS-XL
VALVE FLOW RATE *	28 GPM			
BYPASS SIZE	¾" - 1"		1" - 1¼"	
SOFTENING CAPACITY	28,000 Grains	32,000 Grains	48,000 Grains	64,000 Grains
RESIN VOLUME	.9CUFT	1.0 CUFT	1.5 CUFT	2.0 CUFT
MEDIA TANK SIZE DXH	8" X 44"	9" X 48"	10" X 54"	12" X 52"
BRINE/SALT TANK SIZE	15" X 35" Square			
SHIPPING WEIGHT SYSTEM	87 lbs	98 lbs.	125 lbs.	150 lbs.
SHIPPING WEIGHT BRINE	15 lbs.	16 lbs.	17 lbs.	18 lbs.

**TANK** \*pressure drop at flow rates listed is less than 15 PSI.

## BUILT TO LAST A LIFETIME!

DISTRIBUTED BY:

